

401 Legend Lane • Peculiar, MO 64078

Tech Line (816) 758-4504

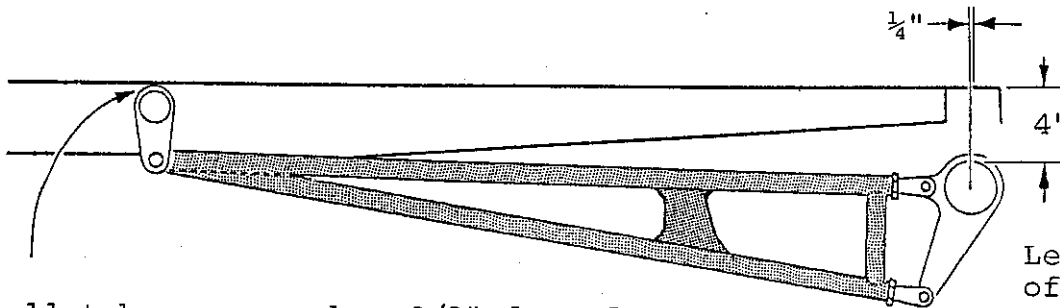
800-334-7240

Fax (816) 758-4512

28 - 31 Model 'A' LADDER BAR KIT

When assembling bars, lay one bar over the other and line up all 3 hook-up points with bolts.

Center of rearend is $\frac{1}{4}$ " ahead of center of rear crossmember.



Leave rear spring off and space rearend 4" down from top of frame.

Install tube crossmember $\frac{3}{8}$ " down from top edge of frame rail. Position rearend and work forward to locate crossmember position and rotation before welding.

