

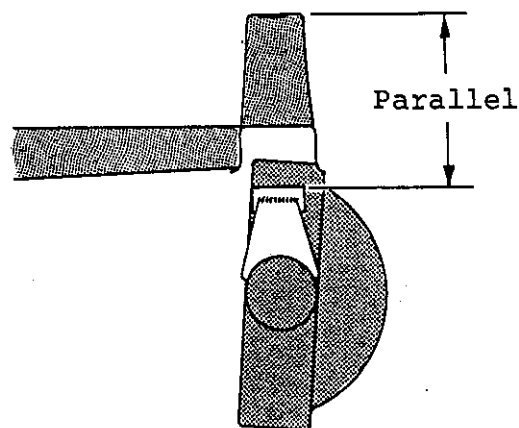
Instructions for #2019

## MODEL 'A'

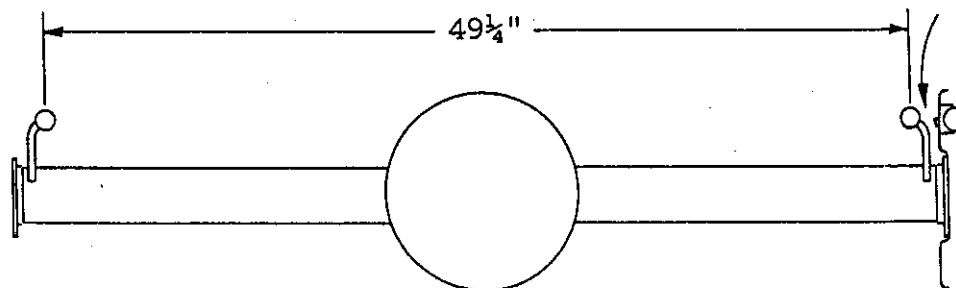
MODEL 'A' REAR SPRING MOUNTS

*\*Note:*  
When using \*2058 (Posie #2931 RC)  
brackets are welded at 46".

The spring mounts are relative to the spring, and the spring is relative to the crossmember. To avoid binding the spring and/or spring shackles, position the spring mounts with the tube parallel to the crossmember after pinion angle is set and rearend is at ride height.



49 $\frac{1}{4}$ " is the stock Model A dimension from center to center of the spring mount tubes. If your rearend is not wide enough to accommodate the spring mounts at this width, then the spring must be narrowed accordingly by a qualified spring shop. Be sure to have adequate clearance for brake lines coming from the wheel cylinders.



Watch clearance  
for brake line.