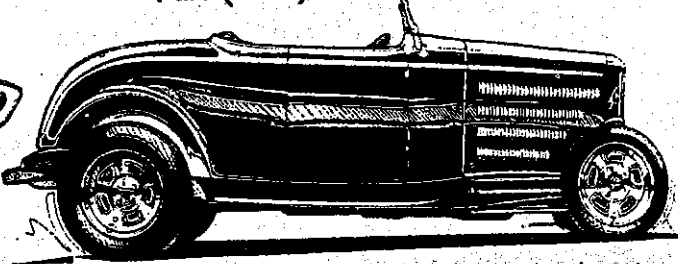
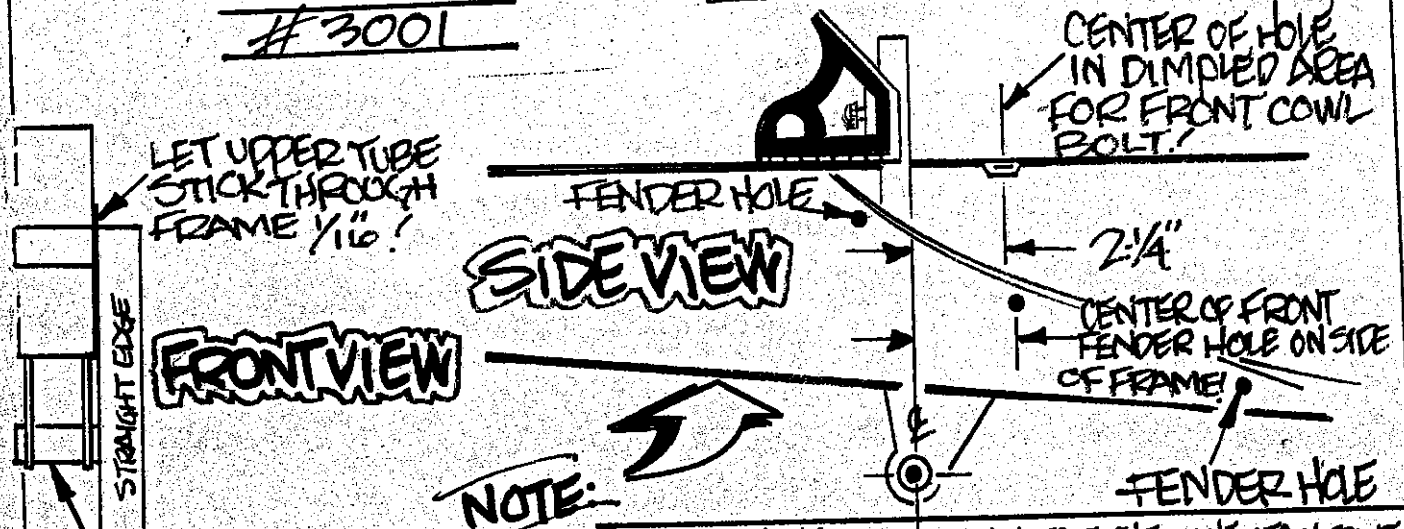


## "32 FORD" HIGH BOY 4 BAR KIT INSTALLATION



#3001



**NOTE:**  
THE BRACKET IS POSITIONED IN RELATION TO EITHER THE STOCK FRONT COWL BOLT HOLE IN THE DIMPLED AREA ON TOP OF THE FRAME OR THE STOCK FENDER BOLT HOLE (INDICATED ABOVE) ON THE SIDE OF THE FRAME RAIL. FROM THE CENTER OF EITHER HOLE MEASURE FORWARD THE CORRECT AMOUNT TO A SQUARE PLACED ON THE TOP SURFACE OF THE FRAME. THE BRACKET IS POSITIONED SO THE CENTER OF THE TUBE IS LOCATED ON THIS LINE. TACK WELD THE BRACKET TO THE FRAME!



**NOTE:**  
THE UPPER BAR IS MOUNTED TO A TUBE INSTALLED THROUGH THE FRAME RAIL AND BOXING PLATE. THE POSITION OF THIS TUBE IS ALSO RELATED TO THE SAME STOCK HOLES IN THE FRAME. FROM THE CENTER OF EITHER HOLE MEASURE FORWARD THE CORRECT AMOUNT ON THE TOP SURFACE OF THE FRAME, THEN SCRIBE A LINE. THEN MEASURE UP 4 1/2" FROM THE CENTER OF THE TUBE IN THE BRACKET TO A POINT ON THE LINE. THIS IS THE CENTER OF THE TUBE INSTALLED IN THE FRAME!