

401 Legend Lane • Peculiar, MO 64078

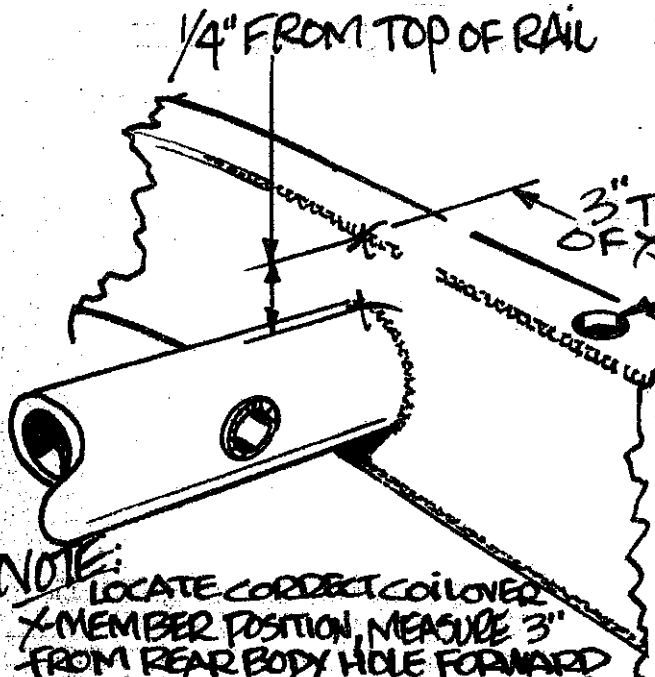
Tech Line (816) 758-4504

800-334-7240

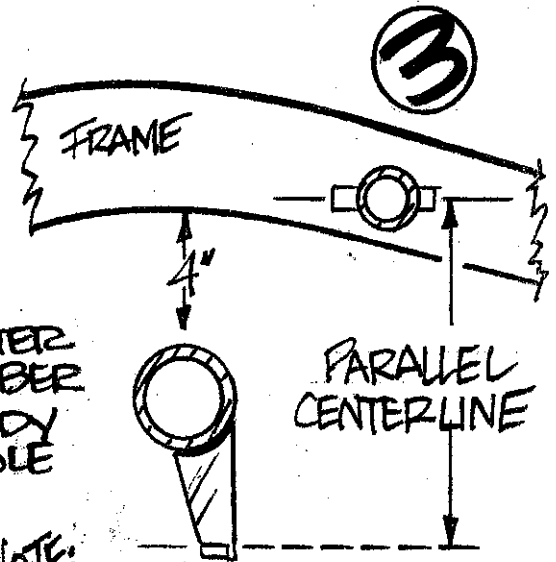
Fax (816) 758-4512

#302

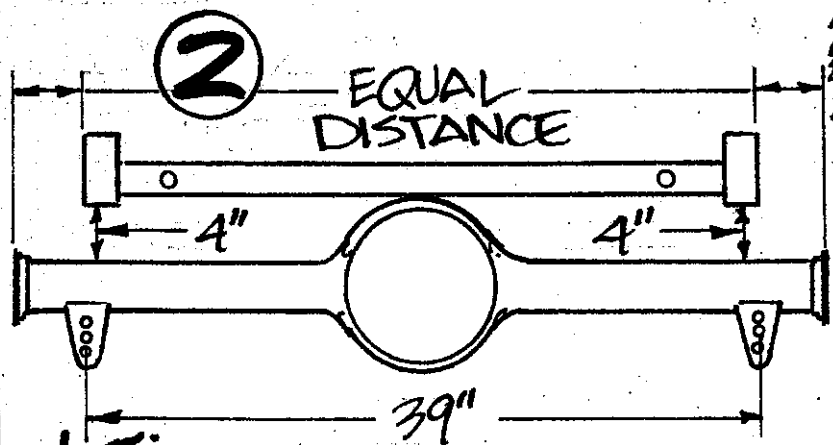
## 32 REAR COILOVER CROSSMEMBER



**NOTE:** LOCATE CORRECT COILOVER X-MEMBER POSITION, MEASURE 3" FROM REAR BODY HOLE FORWARD TO CENTER OF TUBE AS SHOWN. POSITION TUBE 1/4" DOWN FROM TOP OF RAIL, CLAMP AND TACK IN PLACE. MEASURE AGAIN BEFORE FINAL WELD.



**NOTE:** MOUNT THE SHOCK BRACKETS ON THE HOUSING WITH THE CENTER LINES OF THE TUBES PARALLEL TO THE TUBE THROUGH THE X-MEMBER. THE HOUSING SHOULD BE 4" FROM THE FRAME TO APPROX. RIDE HEIGHT.



**NOTE:** POSITION THE REAR END WITH EQUAL DISTANCES ON EACH SIDE OF THE FRAME AND 4" BETWEEN THE TIP OF THE HOUSING AND THE BOTTOM OF THE FRAME AS SHOWN.

