

PETE JAKES



and

• HOT ROD PARTS •

33-34 FORD "HIGH-BOY"

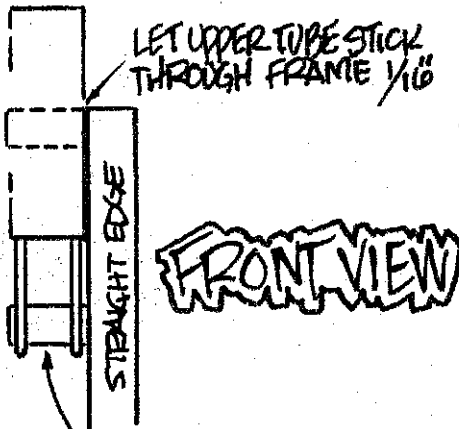
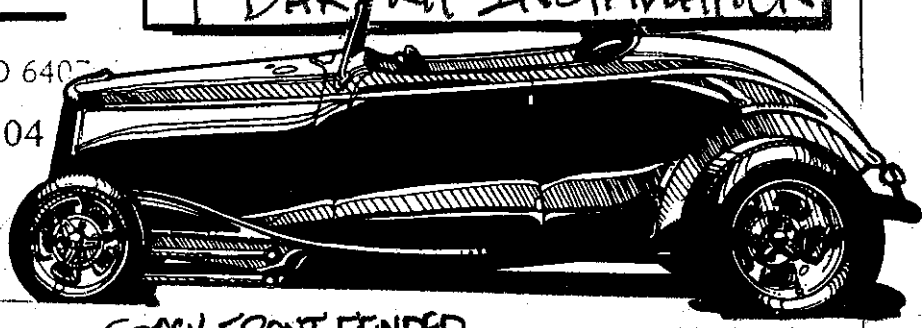
4-BAR KIT INSTALLATION

401 Legend Lane • Peculiar, MO 6407

Tech Line (816) 758-4504

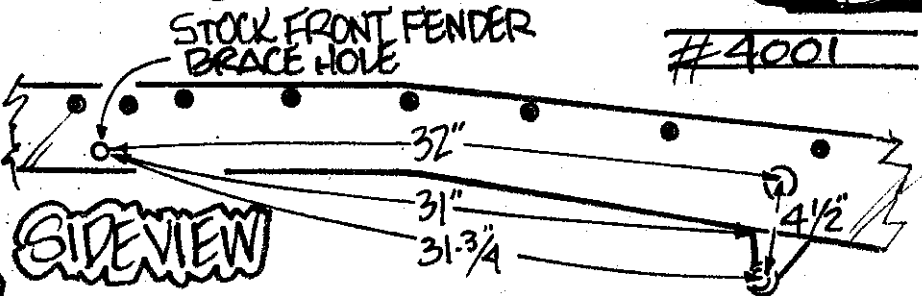
800-334-7240

Fax (816) 758-4512



FRONT VIEW

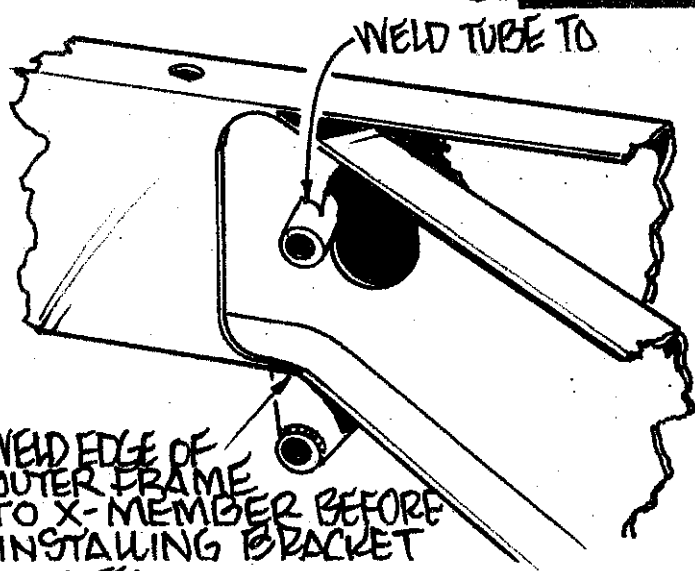
MOUNT BRACKET PARALLEL TO SIDE OF FRAME RAIL.



SIDE VIEW

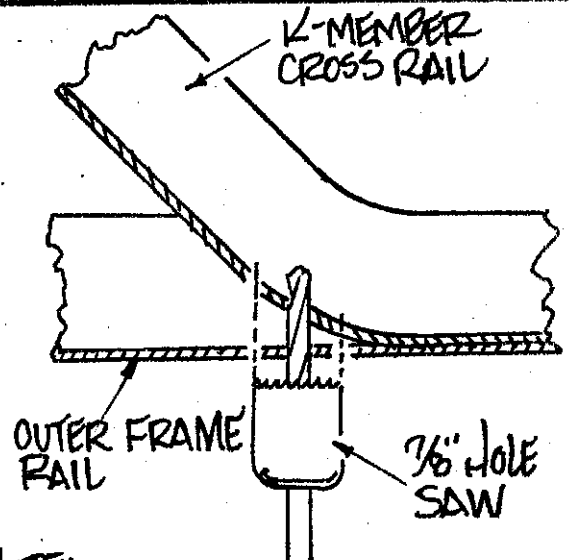
NOTE:

Front edge of bracket is located 31" back from center of fender brace bolt hole indicated above. Check to see that center of tube in bracket is 31-3/4" back from the same bolt hole as the position of the tube is the important thing. Upper bar is mounted to a tube installed through the frame rail. The center of this tube is 32" back from the center of the fender brace bolt hole, and 4 1/2" up from the center of the tube in bracket.



NOTE:

Hole for upper tube must be cut through X-member rail at an angle. It will also overlap the large stock hole, so be very careful when drilling through. Weld the tube to the X-member rail on the inside, and weld tube to outside of outer rail. If frame doesn't have an X-member, tube must be welded to boxing plate.



NOTE:

Start this hole with 1/8" dia. drill. Be careful to keep drill in alignment as it starts through the X-member rail as it is on a 30° angle at this point. The hole saw will cut through the angled rail with no trouble. Use a round file to finish up if necessary.

©COPYRIGHT-P&S