

PETE JAKES



and

• HOT ROD PARTS •

401 Legend Lane • Peculiar, MO 64078

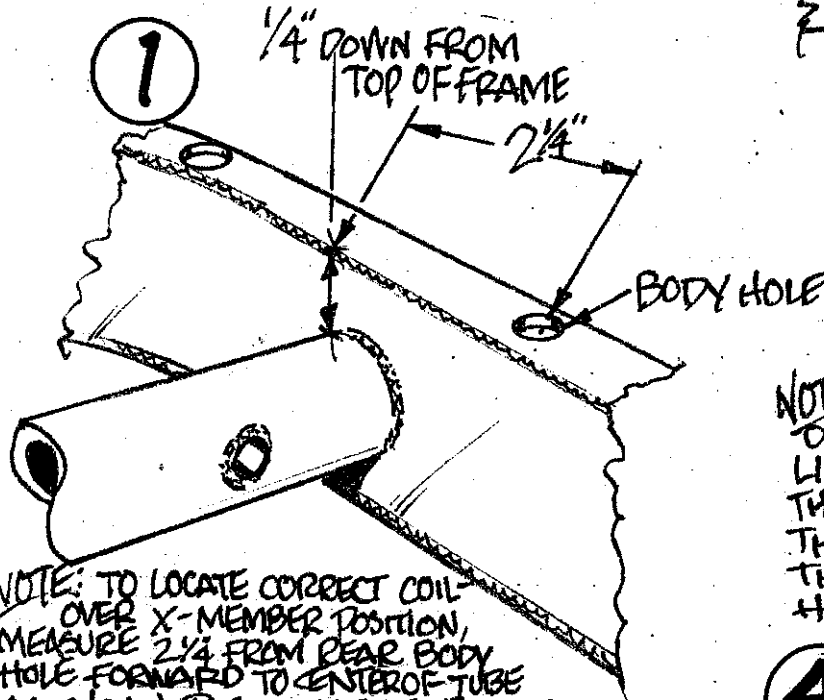
Tech Line (816) 758-4504

800-334-7240

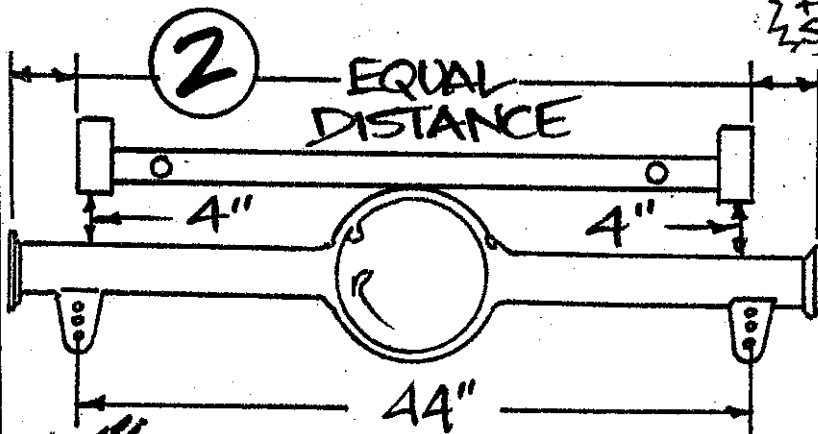
Fax (816) 758-4512

#4017

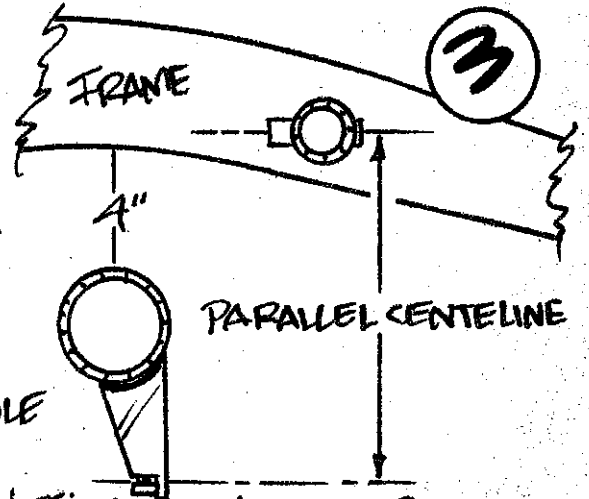
33-34 REAR COILOVER CROSSMEMBER



NOTE: TO LOCATE CORRECT COILOVER X-MEMBER POSITION, MEASURE 2 1/4 FROM REAR BODY HOLE FORWARD TO CENTER OF TUBE AS SHOWN. POSITION TUBE 1/4 DOWN FROM TOP OF RAIL CLAMP AND TACK IN PLACE. MEASURE AGAIN BEFORE FINAL WELD



NOTE: POSITION THE REAR END WITH EQUAL DISTANCES ON EACH SIDE OF THE FRAME AND 4" BETWEEN THE TIP OF THE HOUSING AND THE BOTTOM OF THE FRAME AS SHOWN.



NOTE: MOUNT THE SHOCK BRACKETS ON THE HOUSING WITH THE CENTER LINES OF THE TUBES PARALLEL TO THE TUBE THROUGH THE X-MEMBER. THE HOUSING SHOULD BE 4" FROM THE FRAME TO APPROX. RIDE HEIGHT.

