

# NO BUM STEER

Unfortunately has a larger spline than the standard unit) will accept the stock Ford tie rod end as is. Either steering box has a fiber-type coupler on the short steering shaft so that it can be used with various new-car steering columns, or else adapted to the original column and wheel.

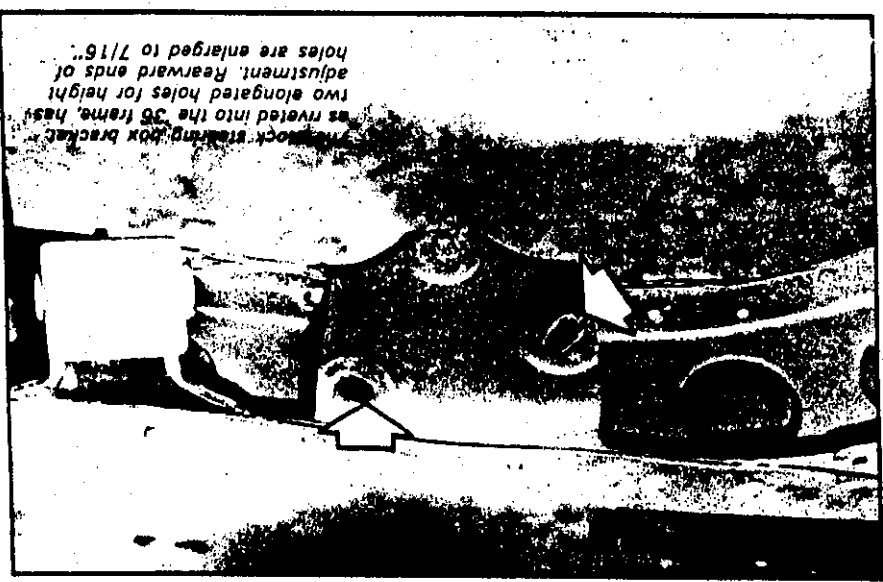
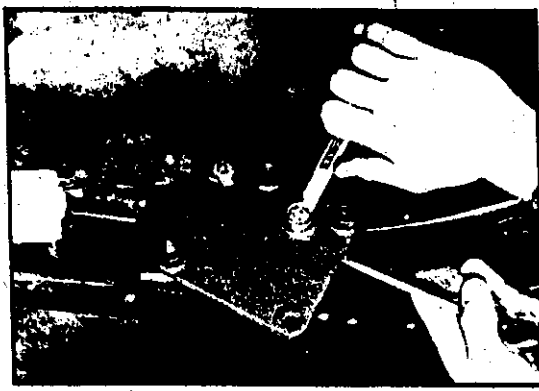
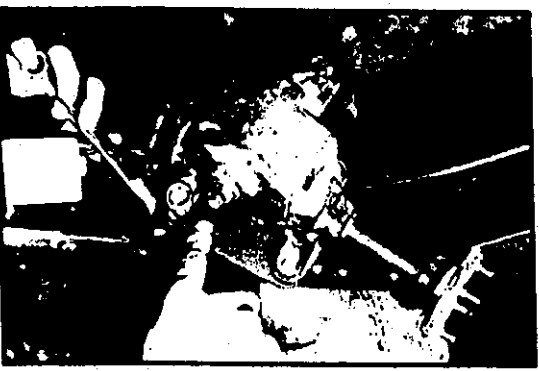
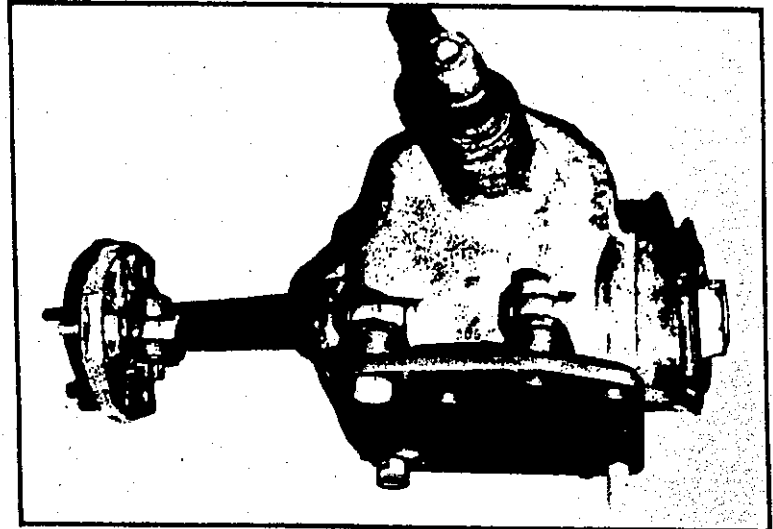
This was Pete & Jake's prototype adaptation when we photographed it; we know that the '37-'48 Ford steering brackets are all quite similar, and the adapter should be suited to most of these models. For more information, call or write Pete & Jake's Hot Rod Parts.



ABOVE—This view illustrates how plate fastens to the Saginaw box. Uneven placement of ears requires short tube spacers.

ABOVE RIGHT—Installation, however, begins with the bolting of the adapter to the frame bracket with the two bolts shown.

RIGHT—Then the steering box is attached. All four mounting points on it are secured, one bolt through both box and bracket.



Mounting holes are threaded on Saginaw box; for P & J application, these two are drilled out to 7/16".

Adapter, made of eighth-inch plate, uses one threaded spacer so no extra holes have to be drilled in the frame.

